



Respect Resilience Responsibility

Curriculum Information for Nursery—Spring 2020

What we will learn this term...

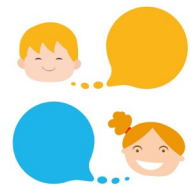
At Highcliffe Primary we believe a child learns best through child initiated play where they can build important life skills such as curiosity, concentration, creativity, problem-solving, use of their imagination and persistence through purposeful play experiences.

Although we follow the child's lead and recognise each child's different starting points, we have included the key aspects of a child's development that we will be encouraging through play this half term.

We hope our curriculum information supports you in encouraging your child's development at home.

Communication and Language

- To retell parts of stories.
- To understand who, what, where, why and how in simple questions.
- To question why things happen.



Physical Development

- To be able to put their own coat on.
- To explore climbing apparatus.
- To run skilfully and successfully negotiating space.
- To use one handed tools and equipment safely.



Personal Social and Emotional Development

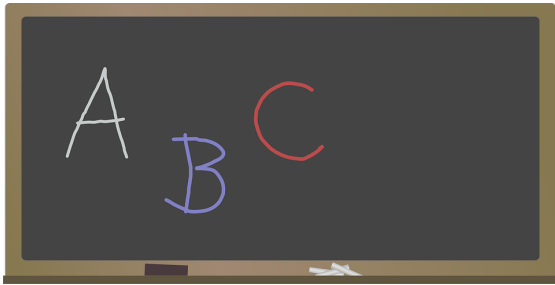


- To enjoy make believe alone and with other children.
- To accept the needs of others.
- To be happy to be part of a group and play together.



Literacy

- To recognise familiar words and signs such as own name and advertising logos.
- To use pincers, tweezers and threading equipment with increasing control and confidence.



Mathematics

- To know that numbers identify how many objects are in a set.
- To use positional language.



Understanding of the World

- To show interest in different occupations and ways of life.
- To show interest in the lives of people who are familiar to them.



Expressive Arts and Design

- To explore different sounds through singing and using instruments
- To engage in a variety of construction experiences.
- To join in with imaginative role play

